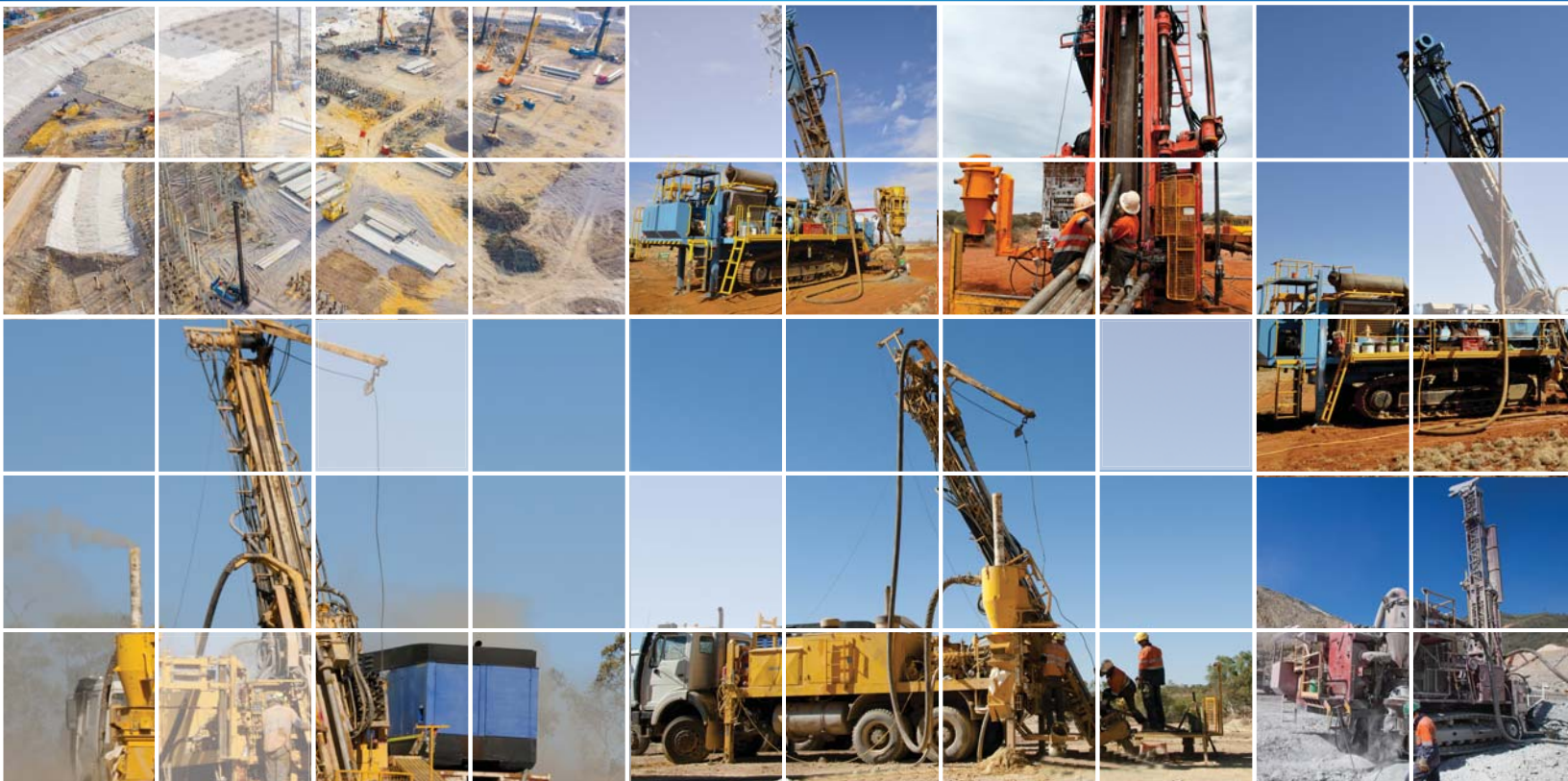




# NCA TWT

## GRIFFIN SERIES

**Diesel Drive (Tier 4 Final) Portable Compressors**  
**Volumes to 1700 SCFM Pressures to 500 PSIG**



**RELIABLE**

**ENERGY EFFICIENT**

**BEST VALUE PACKAGE**

**With 60 years of experience, NCA has been serving clients all over the globe with innovative and high quality compressors. Our new NCA-TWT Griffin Series provides one of the most competitive, high quality and energy efficient, EPA compliant (with Tier 4 Final / Stage V diesel engines) portable air compressors.**



### **Peace of Mind Compressor**

- Simple design, tough construction and trustworthy Canadian quality assurance provide the required peace of mind in critical projects.
- Fully backed 1 year / 2,000 hour package.

### **Built Tough**

- Oversized fuel tanks for longer work days
- Strengthened suction air filters and pre-cleaners for dusty environments
- Two heavy duty batteries for maximum cranking ability at lower temperatures
- Synthetic compressor oil standard for longer life
- Suitable for extreme operating conditions of 15°F (-13°F with cold weather Pack) to +120°F



HIGH EFFICIENCY  
TWO STAGE AIR END

### **Energy Efficient Designs for Better Fuel Economy**

- Large rotor designs offer 7 to 10% higher efficiency than standard rotor design
- Fully automatic intake air control and step less speed regulator regulates engine speed according to demand for best fuel economy
- Two-Stage air end design in model GDSP 1700 offers 10% -15% higher efficiency compared to other similar capacity single-stage designs



IMPROVED CAPACITY  
CONTROL

### **Operator & Maintenance Friendly**

- The base frame contains 110% of onboard fluid, preventing leakage and cleaning costs
- Fluids drain to skid edge at one location for easy disposal
- Easy and safe access to key components through large doors with slam latches
- Coolers are not stacked and have access ports to provide easy cleaning

### **Advanced FronTech Controller**



FronTech  
CONTROLLER

- Large Antiglare LED Screen packed with technology for user friendly operation, maintenance alerts and efficiency for fuel savings
- Powerful insight to increase uptime
  - o Easy access to important operating parameters
  - o Onboard mechanic alerts
  - o Increased uptime through preventive maintenance notifications
  - o Multi Pressure capability
- MAA (Monitor Anytime Anywhere) optional cloud based, NCA equipment monitoring and email alert notification feature to keep an eye on your compressor's performance and health through your mobile device





### Safety First Construction

The lockable Battery Disconnect Switch and External Emergency Stop provide additional safety

### Easy Handling

- Modular design allows Skid version to become Trailer/Towing version
- Dual axle trailer with fork pockets makes for easy handling

### Uninterrupted Performance

External fuel fill, and external fuel tank option allows for extended run time without interruption

NCA-TWT Model		GDHP 1350	GDHP 1150	GDHP 750	GDSP 1700	GDSP 1000
Stages		2	2	2	2	1
Flow Rate	cfm	1350/1150	1150/900	750	1700/1500	1000/950/780
Discharge Pressure	psi	350/500	350/500	350	150/200	115/145/200
Engine Manufacturer		*CUMMINS	CUMMINS	**CUMMINS	CUMMINS	**CUMMINS
Model		X15	X12	QSB6.7	X12	***L9
Power (HP/KW)		675/503	513/383	310/231	513/383	325/242
Fuel Tank Capacity	gal	290	200	68	290	185
DEF Tank Capacity	gal	13	13	6.6	13	12
Discharge Connections		NPT 2"×1	NPT 2"×1	NPT 2"×1	NPT 2"×1	NPT 2"×1
Weight (Skid Only)	lb	18739	15200	7400	18739	9750
Weight (with Running Gear)	lb	20062	16314	7800	20062	10400
Dimensions (Skid Only) (LxWxH)	inch	197×87×95	166×83×89	138×63×73	197×87×94	144×80×74
Dimensions	inch	249×87×111	199×83×105	209×86×85	250×87×107	160×80×89

An optional third pressure setting of 250 psi is available for GDHP 1350 and GDHP 1150

\*Scania engine is available upon request

\*\*Volvo engine is available upon request

\*\*\*QSB 6.7 model available upon request

Performances indicated are within +/- 5%

Performances measures are at reference conditions of Sea Level, 68°F and 0% RH

### Available Options

- Alternative Diesel Engines
- Custom Colors
- After Cooler Package
- Cold Weather Package
- High Ambient Capability
- Hazardous Area Options – Rig Safe
- Refinery Package

### Superior After Sales Service and Spares Parts Availability!

Keeping your compressors or drilling equipment running, for today and for the future, is critical to your success.

That's why NCA's network of certified and factory trained technicians and engineers are available to provide the support you need 24 hours a day, 365 days a year

## APPLICATIONS INCLUDE:

- Demolition and Foundation Work
  - General Construction
  - Geotechnical Drilling
  - Geothermal Drilling
  - Water Well Drilling
  - Vacuum Excavation
  - Mineral Exploration - Reverse Circulation Drilling
  - Sandblasting
  - High Pressure Feed for Nitrogen Membranes
  - Oil & Gas Production Drilling and Well Services
  - Pipeline Services
- and Many More..



EASY  
TRANSPORTATION



MECHANICS  
PREFERRED



SUPERIOR  
QUALITY



ENERGY  
EFFICIENT



**National Compressed Air Canada Ltd.**

6890 Davand Drive, Mississauga, Ontario, Canada L5T 1J5  
Tel: (905) 897-9800 or 1-800-268-2052 Fax: (905) 897-9900  
E-mail: [headoffice@nationalcompressedair.com](mailto:headoffice@nationalcompressedair.com)



**NCA TWT**

Distributed By:

