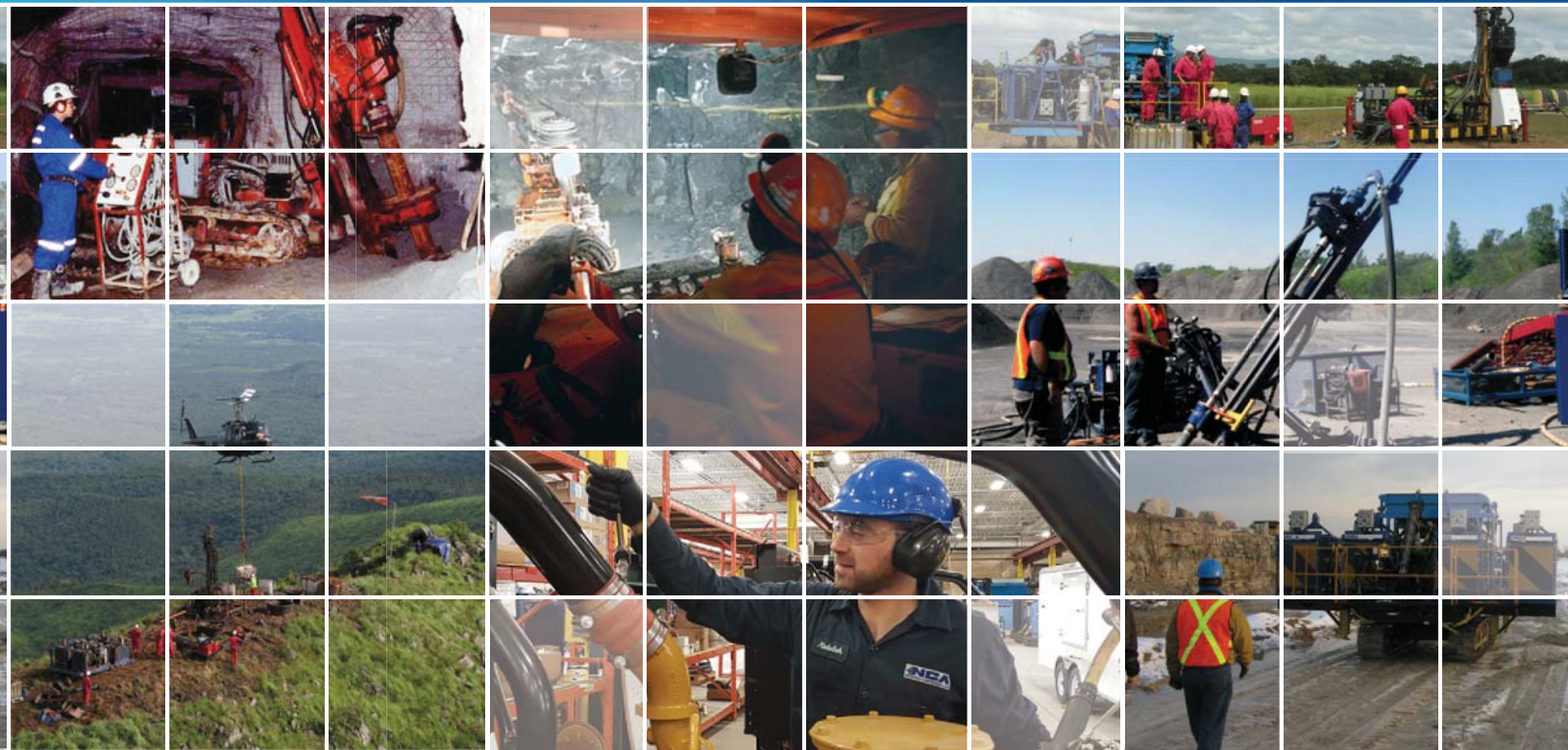




ROTARY SCREW BOOSTERS



Providing Innovative Solutions to Customers on Every Continent...



Boost your productivity with NCA Rotary Screw Booster Compressors!

With decades of field experience and testing in extreme operating conditions, combined with a philosophy of continuous product improvement based on client feedback, NCA provides an unmatched performance and superior quality in rotary screw boosters.

- Innovative stepless control system
- Low discharge air temperatures without after-cooler
- High efficiency rotary screw designs
- Extreme ambient capabilities
- Packages designed for specific applications
- Customized designs to client's needs

Mineral Exploration – Reverse Circulation (RC) Drilling and RAB (Surface & Underground)

NCA Rotary Screw Boosters have helped clients all over the globe explore their resources at greater depths



Model NCA 23-24 GSD-H-2

Rated for 800 SCFM @ 350 PSI at 85 PSIG suction
Powered by DeutzTCD 3.6 L4 T4F diesel engine
rated for 134 HP @ 2000 RPM

Contact NCA for list of other available models

Training and Commissioning Support

NCA provides customized training programs as well as site commissioning support as per client's needs

Standard Features

- Lightweight modular construction for helicopter portability
- Side by side water and oil cooler for compact size and ease of cleaning
- Full range modulation air intake for maximum fuel efficiency
- Variable Speed Control
- Unloading control
- Coalescing/Particulate suction air filter
- Various safety features according to equipment operation and site requirements
- Weather proof enclosure for control panel
- Spin-on oil filter
- All service points positioned for ease of maintenance
- Pre-cooler for suction air from feed compressors
- Suction pressure gauge to monitor suction pressure after the pre-cooler - allows operator to set booster engine speed for maximum fuel efficiency

Design Options

- Diesel Engine, Hydraulic or PTO drive options
- Modular design options according to lifting capability of helicopters
- High ambient capability
- Cold weather options
- Inlet Pressure Regulator
- Fuel tank for diesel drive units
- Inlet air pre-cleaners
- Adjustable legs
- Bush guard
- Canvas covers for operation and storage
- Other options as required



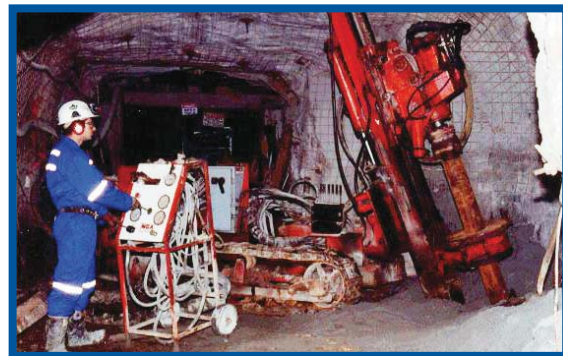


Underground Mining – Blast Hole and Infrastructure Drilling

NCA Rotary Screw Boosters offer a perfect solution to raise the mine air pressures up to 600 PSIG for volume up to 3500 SCFM

Standard Features

- Newly developed rotor profile for maximum efficiency
- Compact size and operator friendly
- Environmentally safe - no cooling water required
- Reduced inrush amperage motor starter
- Rugged skid or trailer mounted design
- Low discharge temperature (176°F/80°C)
- No out of balance forces
- Low maintenance
- 80% less compared to reciprocating type boosters
- No belts to maintain
- No PLC required (offered as optional)
- Standard mine air raised quietly and efficiently to 600 PSIG
- Flexible design to boost compressed air at various suction inlet pressures
- Better hole direction (stable delivered pressure)



Design Options

- Electric, underground approved diesel drive or hydraulic drive options
- Fire Suppression System
- Trailer Version
- Sound attenuating enclosure
- Electrical Options
- Phase Protection
- Circuit breaker and securing clips for relays
- Ground fault protection
- Auxiliary lighting and power
- Audio visual alarms
- Other options as required



Model	Volume (SCFM)	Inlet (PSIG/BARG)	Discharge (PSIG/BARG)	Power (HP)
NCA 17-24 GSE-B	600	100/6.9	350/24.1	75
NCA 24-24 GSE-B	850	100/6.9	350/24.1	100
NCA 28-24 GSE-B	1000	100/6.9	350/24.1	125
NCA 37-24 GSE-B	1300	100/6.9	350/24.1	150
NCA 48-24 GSE-B	1650	100/6.9	350/24.1	200

Performances indicated are within +/- 5%
NCA reserve the right to change the specifications without notice for product improvement



Contact NCA for your unique custom engineered solutions



Other NCA Products:

- Helicopter Portable Compressors
- Man Portable Compressors
- Single Stage Screw Compressors
- Two Stage Screw Compressors
- Booster Compressors (Air and Nitrogen)
- High Pressure Reciprocating Booster Compressors (Air and Nitrogen) to 5000 psig
- Natural Gas Booster Compressors
- Membrane Nitrogen Generators
- PTO Air Compressors
- Compound Air Compressors to 5000 psig
- Track Carriers
- Drill Rigs
- Man Portable, Heli Portable and Track Carrier Mounted



National Compressed Air has been an industry leader in custom manufacturing since 1962. By working directly with our customers we design and manufacture quality products that meet their individual needs and ensure successful projects.



National Compressed Air Canada Ltd.

6890 Davand Drive, Mississauga, Ontario, Canada L5T 1J5
Tel: (905) 897-9800 or 1-800-268-2052 Fax: (905) 897-9900
E-mail: headoffice@nationalcompressedair.com



Other NCA Locations:

Edmonton - Alberta

Tel: (780) 960-6085 or 1-866-960-6085 Fax: (780) 960-6873
E-mail: alberta@nationalcompressedair.com

London - Ontario

Tel: (519) 659-2691 or 1-800-647-4869 fax: (519) 659-3590
E-mail: london@nationalcompressedair.com

Sudbury - Ontario

Tel: (705) 682-4132 Fax: (705) 682-4336
E-mail: sudbury@nationalcompressedair.com

Distributed By:

